

CAT Tests

...

Cognitive Abilities Test

- Tendency/ Inclination
- Personal strengths and weaknesses
- Measurement of potential



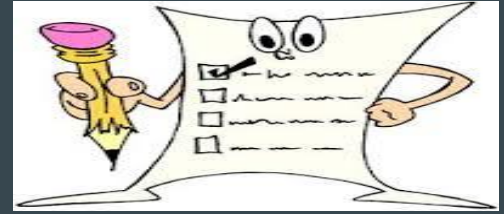
90 - 110 – Average Score

What did we measure?

- Verbal Classification
- Verbal Analogies
- Number Analogies
- Number Series
- Figure Classification
- Figure Matrices
- Figure Analysis
- Figure Recognition



Verbal Bias



- A strong verbal bias shows an ability to reason with words and to think logically
- Important for work involving communicating ideas or understanding written material
- Highly important for academic courses

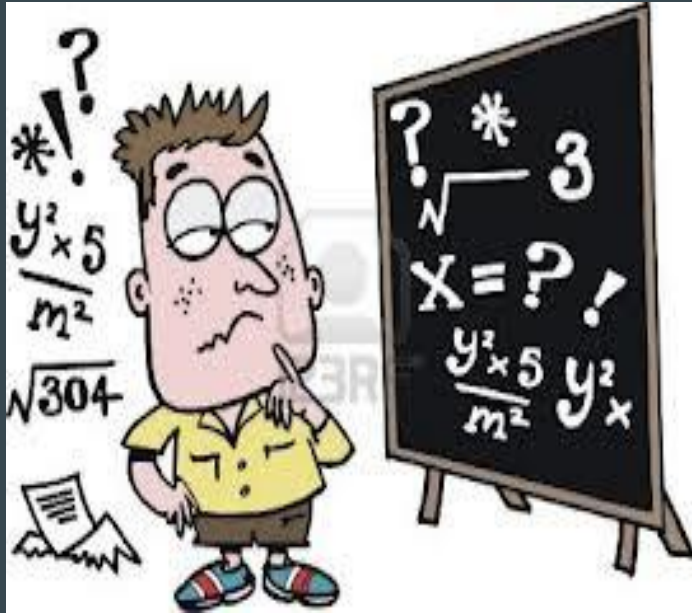
Sample Careers/ Courses:

Law, Journalism, Social Work, Arts, Media, P.R. Advertising, Education

Sample Subjects:

English, History, Geography, Business

Numerical / Quantitative Bias



A strong numerical bias shows the ability to reason with numbers and to deal with quantitative measures.

Sample Careers/ Courses:

Finance, Accounting, Sales, Banking, Architecture, Engineering, Carpentry etc.

Sample subjects:

Maths, Accounting, Physics, Chemistry, Applied Maths, Economics

Non-Verbal Bias

Non-Verbal/ Non-Numerical measure of reasoning power. It assesses how well one can reason with geometric figures or designs

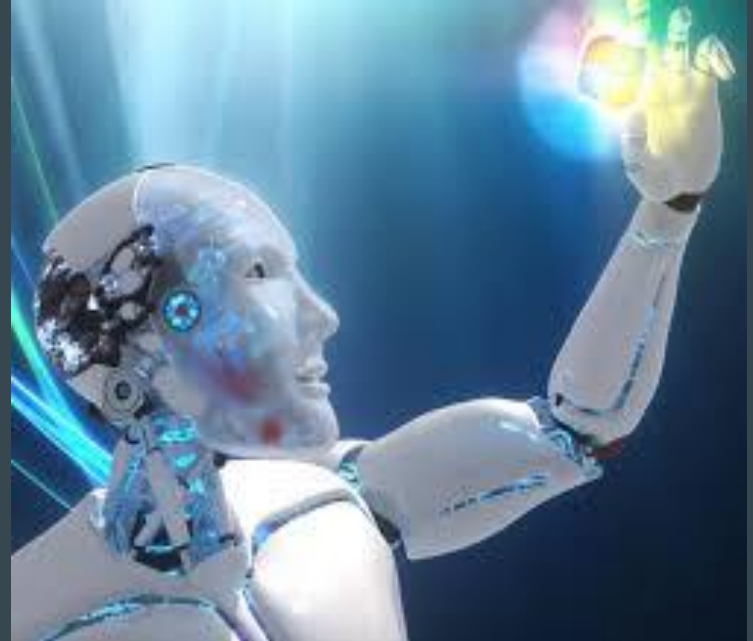
Sample Careers/ Courses:

Engineer, Doctor, Scientist, Software Design, Teacher etc.

Sample

Subjects:

Physics, Chemistry, Biology, History, Art



Spatial Bias

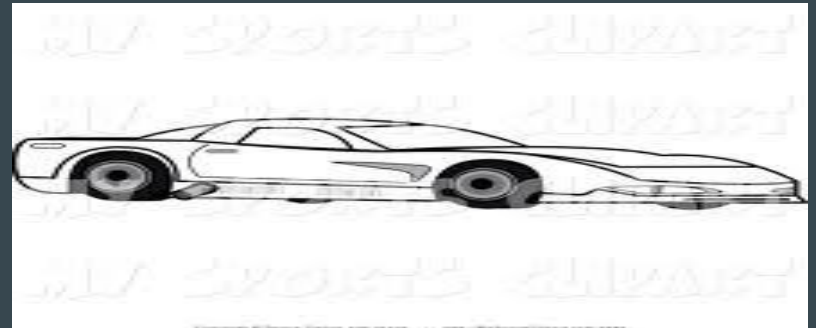
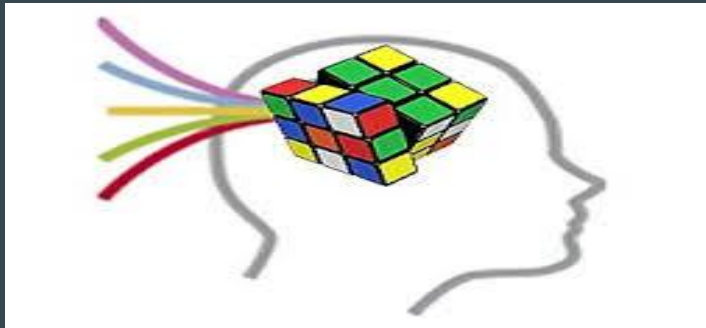
Shows the ability to visualise a three- dimensional object from a two-dimensional pattern and envisage how this object would look if rotated in space

Sample Careers/ Courses:

Software Design, Architecture, Engineering, Carpentry, Product Design, Photography, Fashion Design, Management etc.

Sample Subjects:

DCG, Art, Construction, Maths



Remember



- We use the CAT to give us an insight into our **STRENGTHS**
- They do not measure Creativity, Musical ability, Sporting ability, Social ability etc
- It is just one tool to finding strengths -there are many others e.g. mock results, hobbies and interests, interest tests etc
- If you had an 'off day' due to illness, lack of motivation, distraction etc. when doing the testing, this will have had an impact on your results.