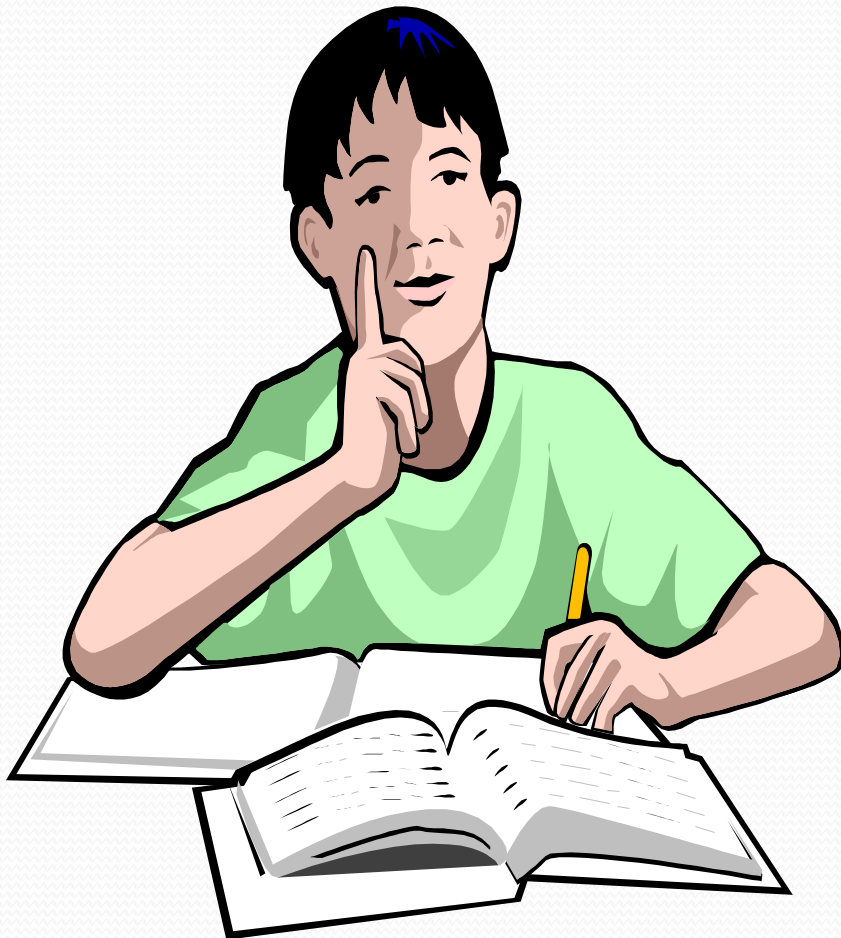


# Subject Choice for Senior Cycle



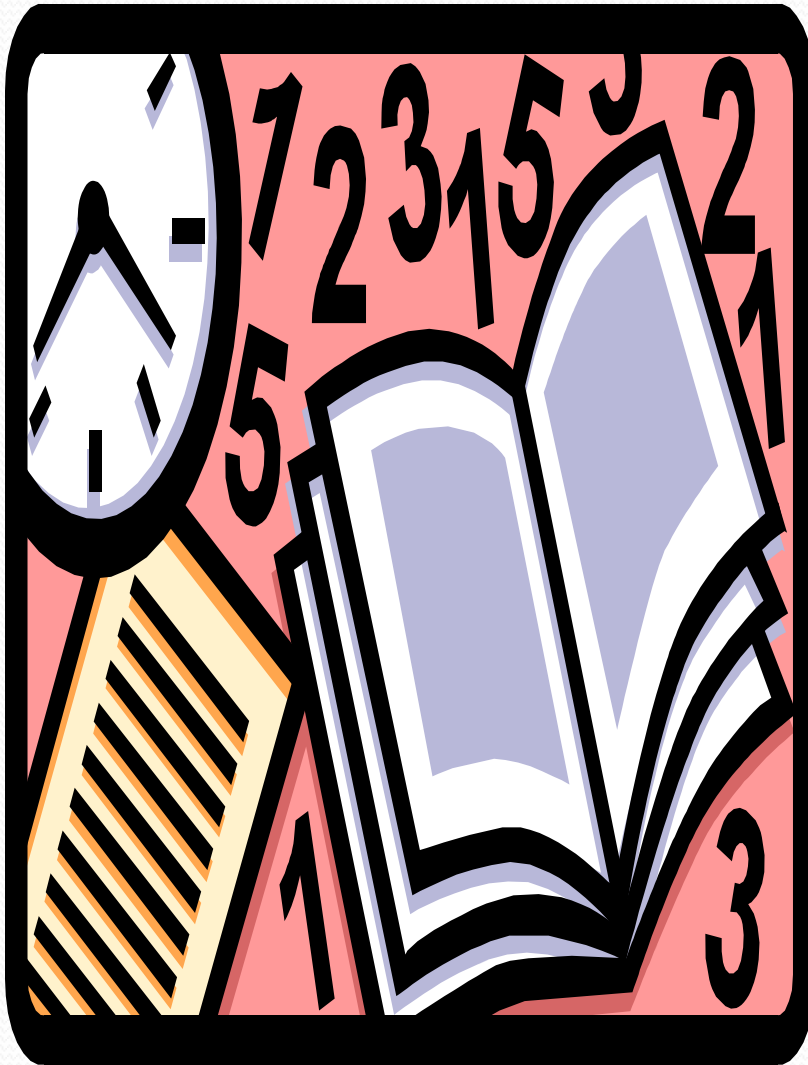


## **Obligatory subjects**

The core  
subjects are  
Irish,  
English  
Mathematics  
Foreign  
Language  
(if needed  
for college)



**What three  
to choose  
from the  
other subject  
choices?**



## Subject Groupings

**IT IS USEFUL  
TO  
CONSIDER  
SUBJECTS IN  
THEIR  
GROUPS**



## **SUBJECT GROUPINGS:**

### **Language Group:**

Irish, English, French, Spanish.

### **Science Group:**

Mathematics, Physics, Chemistry, Biology, Agricultural Science, Applied Mathematics.

### **Business Studies Group:**

Accounting, Business, LCVP

### **Applied Science Group:**

DCG, Construction Studies, Engineering, Home Economics

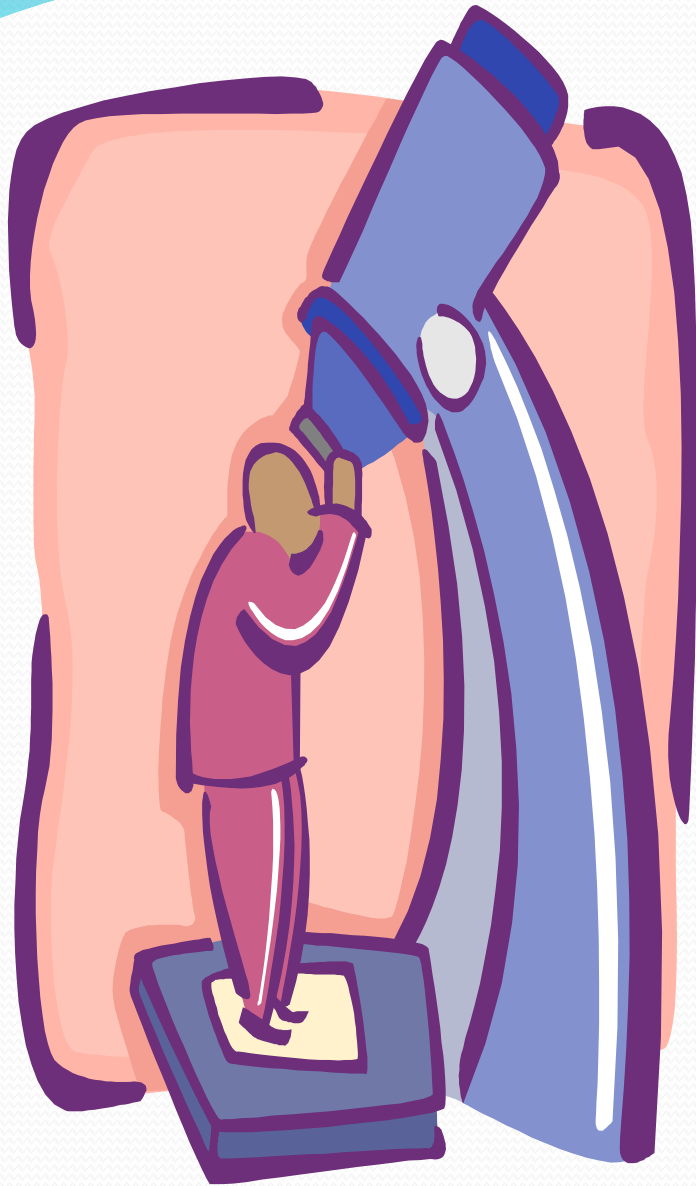
### **Social Studies/Humanities Group:**

History, Geography, Art, Religious Education, Music



# Language Group

Irish,  
English,  
French,  
Spanish



**Science Group**  
Mathematics  
Physics  
Chemistry  
Biology  
Agricultural Science  
Applied Mathematics

**Business  
Studies  
Group**  
Accounting,  
Business and  
LCVP.







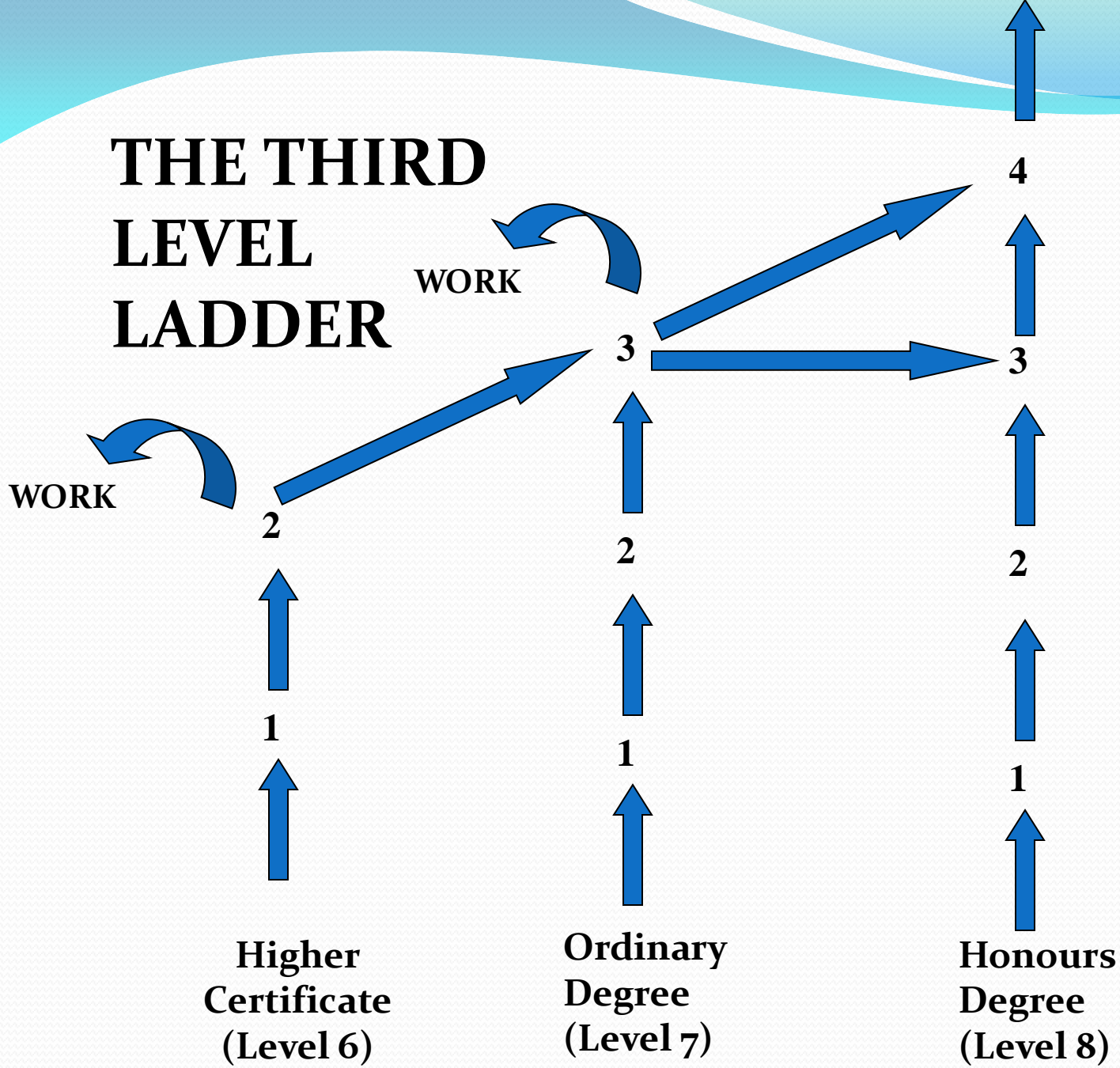
# Applied Science Group

Engineering,  
Construction  
Studies and  
DCG



**Social Studies**  
**Group**  
History,  
Geography,  
Art and  
Religious Studies

# THE THIRD LEVEL LADDER



# SUBJECT CHOICE AND COLLEGE ENTRY

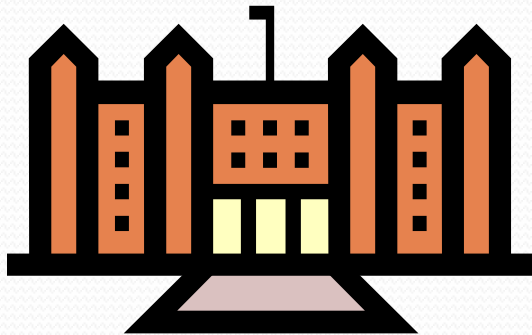
## 1. BASIC ENTRY REQUIREMENTS

- 3<sup>RD</sup> LANGUAGE?

## 2. SPECIFIC COURSE REQUIREMENTS

- SCIENCE(S)? LANGUAGE?

## 3. SELECTION SYSTEM



- APTITUDE TEST/INTERVIEW  
PORTFOLIO/PROJECT

- LEAVING CERTIFICATE  
POINTS SYSTEM:  
6 BEST SUBJECTS

## COLLEGES AND LANGUAGE REQUIREMENTS

### ***THREE LANGUAGES:***

#### **NATIONAL UNIVERSITY OF IRELAND COLLEGES:**

**U.C.D., U.C.C.; NUI GALWAY; NUI MAYNOOTH (not for Eng, Sci, Ag Sci in NUI Colleges); SHANNON COLLEGE HOTEL MGT.; ROYAL COLLEGE OF SURGEONS.**

### ***TWO LANGUAGES:***

**UNIVERSITY OF LIMERICK; TRINITY COLLEGE; MATER DEI INSTITUTE; NCAD (If presenting ART)**

### ***ONE LANGUAGE:***

**ALL 13 INSTITUTES OF TECHNOLOGY; NCI; DCU; PRIVATE COLLEGE**



# Science Essential to Maximise Choice in:

MEDICINE

DENTISTRY

VETERINARY

PHARMACY

PHYSIOTHERAPY

RADIOGRAPHY

NURSING

DIETETICS

OCCUP. THERAPY

SPEECH THERAPY

ARCHITECTURE

MED LAB SCIENCE

SPORTS SCIENCE

SCIENCE

ENGINEERING

OPTOMETRY

PRODUCTION MGT.

NAVAL CADETS

INDUSTRIAL DESIGN

# DECISIONS, DECISIONS, DECISIONS!

1. INTEREST IN SUBJECT

2. ABILITY IN SUBJECT

3. NECESSARY

4. USEFUL

